

# FortiAnalyzer Upgrade Guide

VERSION 5.2.2



Copyright© 2015 Fortinet, Inc. All rights reserved.

Fortinet®, FortiGate®, FortiCare® and FortiGuard®, and certain other marks are registered trademarks of Fortinet, Inc., in the U.S. and other jurisdictions, and other Fortinet names herein may also be registered and/or common law trademarks of Fortinet. All other product or company names may be trademarks of their respective owners. Performance and other metrics contained herein were attained in internal lab tests under ideal conditions, and actual performance and other results may vary. Network variables, different network environments and other conditions may affect performance results. Nothing herein represents any binding commitment by Fortinet, and Fortinet disclaims all warranties, whether express or implied, except to the extent Fortinet enters a binding written contract, signed by Fortinet's General Counsel, with a purchaser that expressly warrants that the identified product will perform according to certain expressly-identified performance metrics and, in such event, only the specific performance metrics expressly identified in such binding written contract shall be binding on Fortinet. For absolute clarity, any such warranty will be limited to performance in the same ideal conditions as in Fortinet's internal lab tests. In no event does Fortinet make any commitment related to future deliverables, features or development, and circumstances may change such that any forward-looking statements herein are not accurate. Fortinet disclaims in full any covenants, representations, and guarantees pursuant hereto, whether express or implied. Fortinet reserves the right to change, modify, transfer, or otherwise revise this publication without notice, and the most current version of the publication shall be applicable.

# 1

## How to Upgrade

**STEP 1: Backup Your Device.**

Backup your device and its configuration.

**STEP 2: Download.**

Upgrade images are available from the Customer Support website.

**STEP 3: Upgrade and Monitor.**

Install the new firmware.

**STEP 4: Verify and Validate.**

Use the GUI to verify that the upgrade succeeded, and run the dataset validation tool to verify your datasets.

# 2

## Upgrade Paths



If you are running v5.0.6 or earlier, please refer to the [5.0.10 Upgrade Guide](#) or [Upgrade Video](#).

Initial Version	Upgrade To	Log Database Rebuild Required?
5.0.6-5.0.10*	5.2.2	Yes
5.2.0 & 5.2.1	5.2.2	No

*\*If you are running v5.0.6, 5.0.7, 5.0.8, 5.0.9, 5.0.10, during the firmware upgrade, your FortiAnalyzer will temporarily disconnect. When complete, you will be able to login and access your FortiAnalyzer. Not all features will be available immediately while the SQL database is rebuilt. View Step 3 Upgrade and Monitor for details.*

# 3

## Detailed Upgrade Instructions

### Step 1. Back Up Your Device.

Backup your device configuration from the Systems Settings tab.

### Step 2. Download.

Download your firmware image.

1. Use the CLI command to check for current reports. Allow them to complete prior to upgrading.

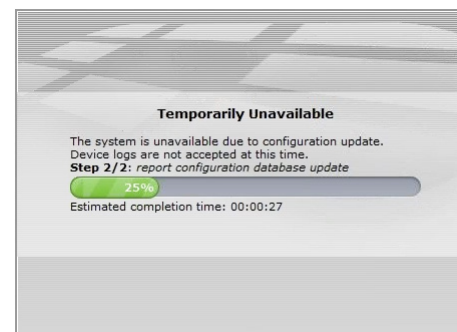
```
FAZ1000D # dia report status running
FAZ1000D # dia report status pending
```

2. If you are upgrading a FortiAnalyzer VM, make sure your VM partition has more than 512MB\*, and your VM server is up to date.

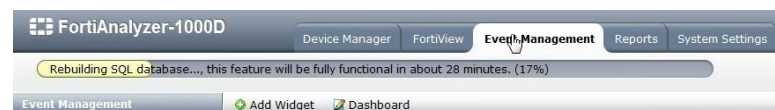
### Step 3. Upgrade and Monitor

Install the downloaded firmware image.

During a firmware upgrade, you will temporarily disconnect to your FortiAnalyzer. When the firmware has been installed, you can reconnect to your device.



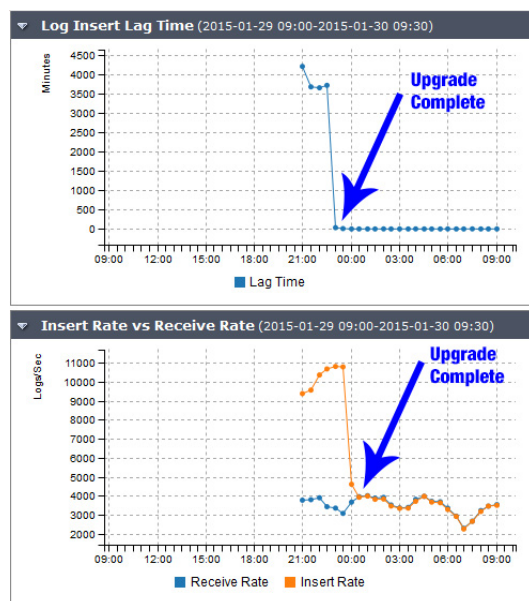
When complete, you will be able to log in and access your FortiAnalyzer. Not all features will be available immediately while the SQL database is rebuilt. A status bar will keep you up to date on the rebuild status:



*\*It is recommended to allocate 1024MB for the FortiAnalyzer VM partition.*

### Step 3. Upgrade and Monitor

Monitor the rebuild progress with the *Log Insert Lag Time* and *Insert Rate vs Receive Rate* widgets. These widgets will show you the gap between logs being received and logs being inserted after the upgrade. You can customize this widget to show data every 60 to 240 seconds. As shown below, you will notice an initial delay in logs being inserted, but that will resolve itself as time passes. You can add these widgets in the same way you add other widgets in the Dashboard.



### Step 4. Verify and Validate

After using GUI to verify that the upgrade succeeded, run dataset validation tool to verify your datasets.

1. Select the *Reports* tab.
2. Select *Advanced* in the left pane.
3. Select *Dataset*.
4. Right-click any report and select *Validate All Custom*.

The screenshot shows the FortiAnalyzer-3000D GUI. The 'Reports' tab is selected. In the left pane, 'Advanced' is selected, and 'Dataset' is highlighted. A right-click context menu is open over a report, showing options: 'Create New', 'View', 'Delete', 'Clone', 'Validate', and 'Validate All Custom'. The 'Validate All Custom' option is highlighted in red.

Dataset	Message
1111	ERROR: types text and inet cannot be matched LINE 1: (select as ...
2222	ERROR: types text and inet cannot be matched LINE 1: (select as ...
3333	ERROR: types text and inet cannot be matched LINE 1: select * from (as ...

## Supported Models

The following models support upgrading to FortiAnalyzer v5.2.2:

FAZ-100C  
FAZ-200D  
FAZ-300D  
FAZ-400C  
FAZ-1000C  
FAZ-1000D  
FAZ-2000B  
FAZ-3000D  
FAZ-3000E  
FAZ-3500E  
FAZ-3900E  
FAZ-4000B

FAZ-VM32  
FAZ-VM64  
FAZ-VM64-HV  
FAZ-VM64-XEN  
FAZ-VM64-KVM  
FAZ-VM64-AWS